

Lesson 2.1 Notes

Learning Target: Identify and Name **Congruent** Figures

- **Congruent** Figures are the same size and shape ("twins")
- Two figures are **Congruent** when they have **Corresponding Angles** and **Corresponding Sides**

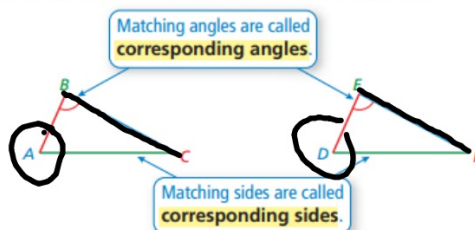
Key Vocabulary

congruent figures,
p. 44
corresponding angles,
p. 44
corresponding sides,
p. 44

Key Idea

Congruent Figures

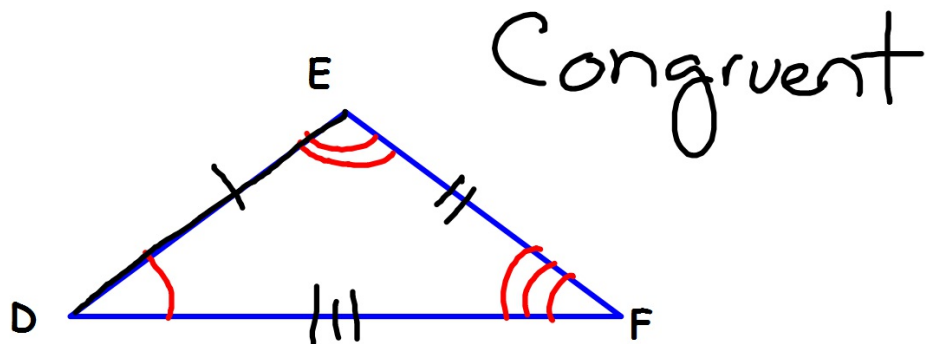
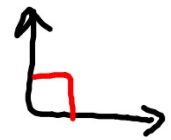
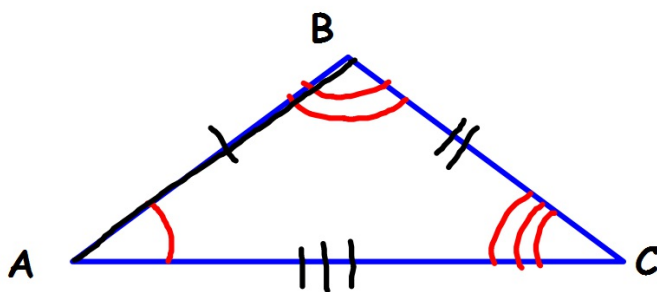
Figures that have the same size and the same shape are called **congruent figures**. The triangles below are congruent.



Terminology and Symbols

Angle C	$\angle C$
Line Segment CD	\overline{CD}
Triangle QRS	$\triangle QRS$
Congruent	\cong
Congruent Angles	$\angle A \cong \angle D$
Congruent Sides	$\overline{AB} \cong \overline{DE}$

Labeling Congruent Figures and Naming Corresponding Sides and Angles



The figures are congruent. Name the corresponding angles and corresponding sides.

Corresponding Angles

$$\angle A \cong \angle W$$

$$\angle B \cong \angle X$$

$$\angle C \cong \angle Y$$

$$\angle D \cong \angle Z$$

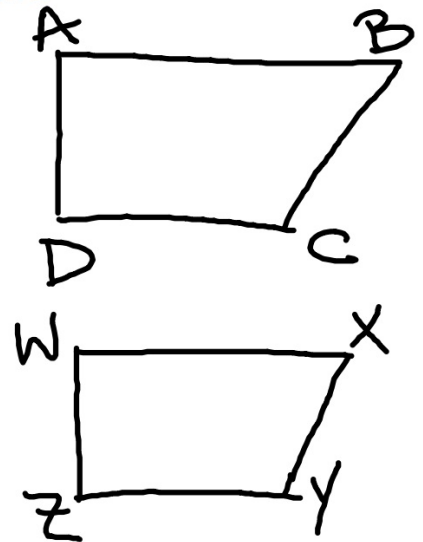
Corresponding Sides

$$\overline{AB} \cong \overline{WX}$$

$$\overline{BC} \cong \overline{XY}$$

$$\overline{CD} \cong \overline{YZ}$$

$$\overline{DA} \cong \overline{ZW}$$



2.1

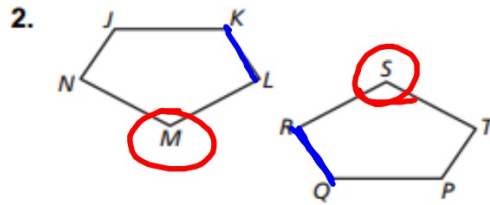
Practice

For use after Lesson 2.1

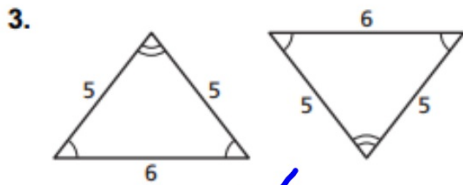
The figures are congruent. Name the corresponding angles and the corresponding sides.

$$\angle M \cong \angle S$$

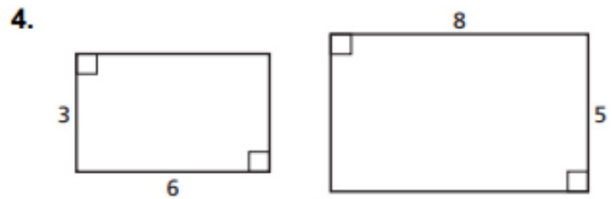
$$\overline{KL} \cong \overline{QR}$$



Tell whether the two figures are congruent. Explain your reasoning.



Yes



No

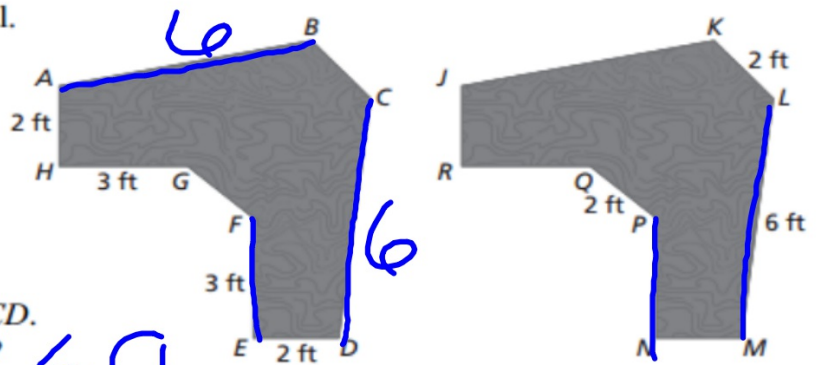
5. The tops of the desks are identical.

a. What is the length of side NP?

3 ft

b. Side AB is congruent to side CD .
What is the length of side AB ?

6 ft



2.1 Homework

Pg 46 & 47

**# 1-11 odd (skip #7),
#4, #12, #15,**

**Extra Credit show me
#13**

=

