

# Red ch. 4 Review

pg 153 #1-19

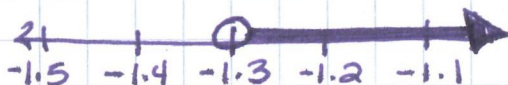
1.  $w > -3$

2.  $y - \frac{1}{2} \leq -\frac{3}{2}$

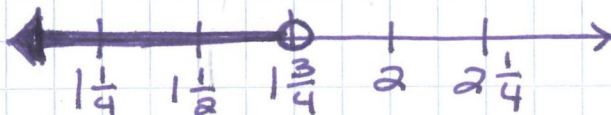
3.  $5 + j > 8$ ;  $j = 7$   $\checkmark 5 + 7 \stackrel{?}{>} 8$ ,  $12 > 8$  (Yes)

4.  $6 \div n \leq -5$ ;  $n = -3$   $\checkmark 6 \div -3 \stackrel{?}{\leq} -5$ ,  $-2 \not\leq -5$  (No)

5.  $g > -1.3$



6.  $s < 1\frac{3}{4}$



7.  $h \geq 42$

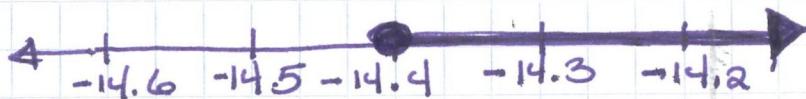
8.  $d + 12 < 19$   
 $\frac{-12 \quad -12}{d < 7}$



9.  $t - 4 \leq -14$   
 $\frac{+4 \quad +4}{t \leq -10}$



10.  $-8 \leq z + 6.4$   
 $\frac{-6.4 \quad -6.4}{-14.4 \leq z}$



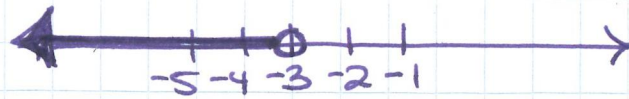
or  $z \geq -14.4$

1.1

1.2

$$11. \frac{6g}{6} < \frac{-18}{6}$$

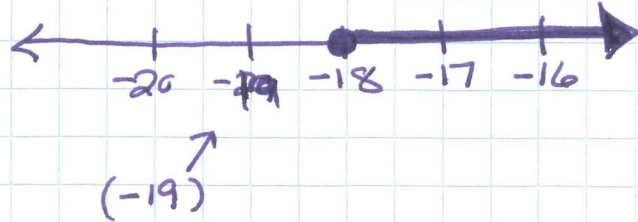
$$g < -3$$



$$12. (-3) \cdot \frac{-r}{3} \leq 6 \cdot (-3)$$

FLIP!

$$r \geq -18$$



$$13. -4 > -\frac{4}{3}s$$

$$\left(\frac{-3}{4}\right) \left(\frac{-4}{1}\right) > \left(-\frac{4}{3}\right) s \left(\frac{-3}{4}\right)$$

FLIP!  $3 < s$   
or  $s > 3$



$$14. \frac{3x+4}{-4} > \frac{16}{-4}$$

$$\frac{3x}{3} > \frac{12}{3}$$

$$x > 4$$



$$15. \frac{z}{-2} - 6 \leq -2$$

$$(-2) \frac{z}{-2} \leq 4 \cdot (-2)$$

FLIP!  $z \geq -8$



$$16. \quad -2t - 5 < 9$$

$$\quad \quad \quad +5 \quad +5$$


---


$$\quad \quad \quad -2t < 14$$

$$\quad \quad \quad \underline{-2} \quad \quad \quad \underline{-2}$$

FLIP!

$$t > -7$$



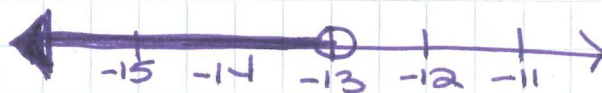
$$17. \quad 7(g+2) < -77$$

$$\quad \quad \quad 7g + 14 < -77$$

$$\quad \quad \quad \underline{-14} \quad \quad \quad \underline{-14}$$

$$\quad \quad \quad \frac{7g}{7} < \frac{-91}{7}$$

$$g < -13$$



$$18. \quad -\frac{1}{3}(p+9) \leq 4$$

$$\quad \quad \quad -\frac{1}{3}p - 3 \leq 4$$

$$\quad \quad \quad \underline{\quad \quad +3} \quad \underline{\quad \quad +3}$$

$$\quad \quad \quad \left(-\frac{3}{1}\right) \left(-\frac{1}{3}p\right) \leq 7 \left(\frac{-3}{1}\right)$$

FLIP!

$$p \geq -21$$



$$19. \quad 1.2(j + 3.5) \geq 4.8$$

$$20. \quad (1.2j + 4.2) \geq 4.8$$

$$\quad \quad \quad 1.2j + 4.2 \geq 4.8$$

$$\quad \quad \quad \underline{-4.2} \quad \quad \quad \underline{-4.2}$$

$$\quad \quad \quad \frac{1.2j}{1.2} \geq \frac{0.6}{1.2}$$

$$j \geq \frac{1}{2}$$

